



**SaniGLAZE**  
TILE & HARD SURFACE RESTORATION

🌐 [www.saniglaze.com](http://www.saniglaze.com)  
☎ 800.874.5554  
✉ [info@saniglaze.com](mailto:info@saniglaze.com)



# Better Than New

Long Lasting Solutions | Cost Effective | Customizable Options

# | Your Hard Surface Experts

AFTER

SaniGLAZE® is **one of the leading providers of tile and hard surface flooring maintenance and restoration to commercial properties throughout the U.S.** We provide an innovative alternative to replacement and offer businesses a way to experience a higher, longer-lasting standard of clean every day.

Tile and grout surfaces can last for several decades and even longer. Sadly, structurally sound tile and grout surfaces are often replaced prematurely due to sanitation and appearance issues. **At a fraction of the cost of replacement, your tile and grout can be made to look brand new.** Furthermore, this can be accomplished with minimal downtime and disruption to your normal routine.



At SaniGLAZE, we provide facilities a **long term cost effective solution** to hard surfaces, that:

- ✓ **Reduces** complaints
- ✓ **Extends** the useful life of their surface
- ✓ **Creates** a happier, healthier environment
- ✓ **Improves** maintenance
- ✓ **Lowers** costs



BEFORE



AFTER

SaniGLAZE Processes transform old, ugly, smelly surfaces **quickly, cost effectively, & permanently.**



**Long Term**  
Solutions

---

**Affordable**  
Solutions

---

**Better**  
Solutions

**AFTER**

# SaniGLAZE Processes

## AT A GLANCE

From removing contaminants to shielding them out, **there is a tile & grout restoration process to meet your needs.**

- EnduraGLAZE
- VariGLAZE
- VariGLAZE MAX
- ChromaGLAZE
- ChromaGLAZE+
- SurfaceGLAZE
- GroutGLAZE

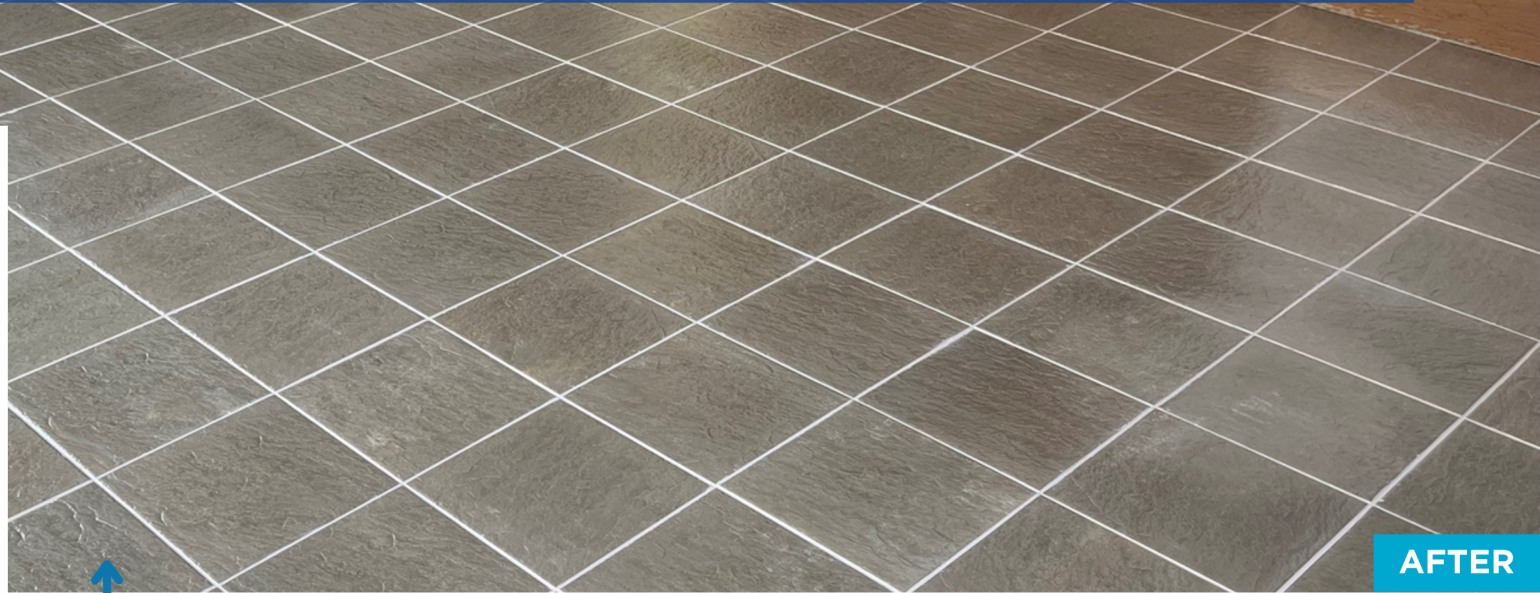
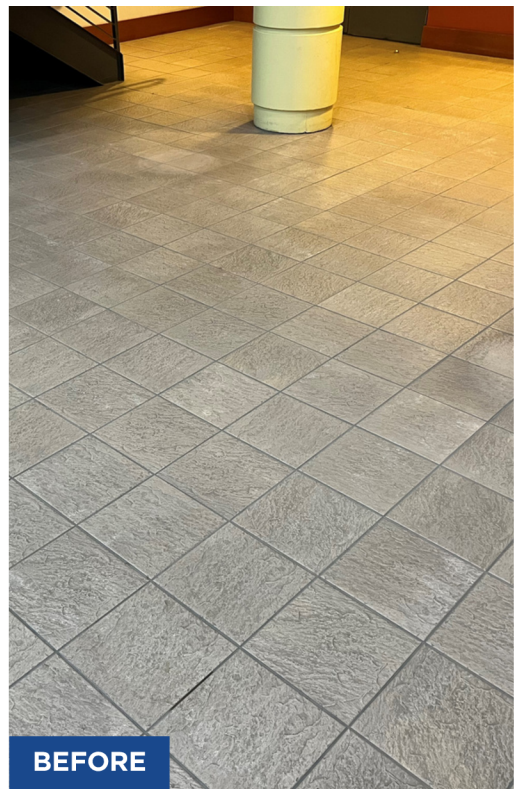
All SaniGLAZE® Processes begin with **thorough cleaning and prep** to ensure long-lasting protection from the coatings and shields that are applied.



AFTER



# EnduraGLAZE

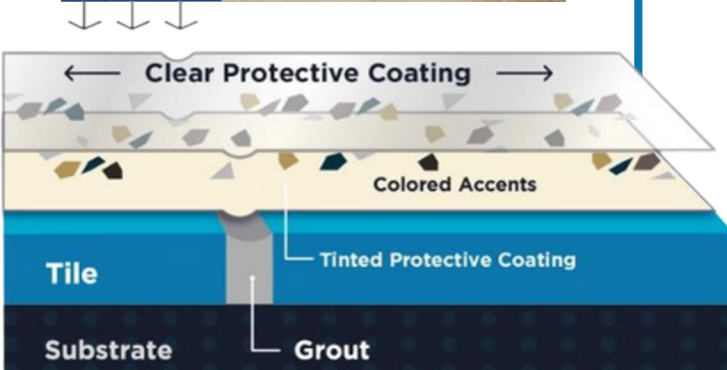


**EnduraGLAZE<sup>SM</sup>** is a restorative bonding process utilizing two groups of coatings – one to overlay the grout and another to shield the entire surface. **This process will restore the natural color and original luster of the tile in most cases.**

The grout joints will be restored to like-new condition; the color of the grout can be changed if desired. **EnduraGLAZE<sup>SM</sup> provides an exceptionally high level of appearance and protection.**



# VariGLAZE

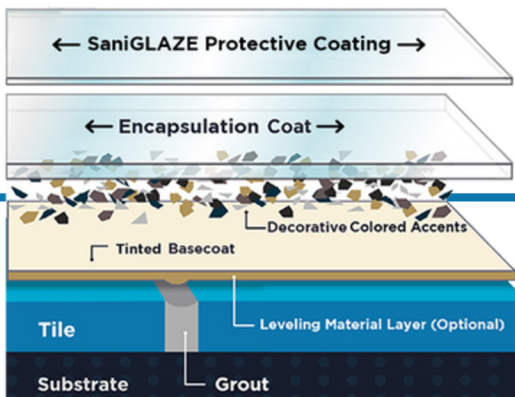


**VariGLAZE<sup>SM</sup>** is a restorative bonding process utilizing two very durable coatings plus decorative accent chips to overlay the entire surface. The base is a pigmented coating available in a variety of colors; the top coat is a clear coating. **This process will change the color of both the tile and grout to create a neat, unified look.** A special compound of micro-particles can be added to enhance appearance and improve the coefficient of friction. **VariGLAZE<sup>SM</sup>** provides an exceptionally high level of appearance and the ultimate in protection.

# VariGLAZE MAX



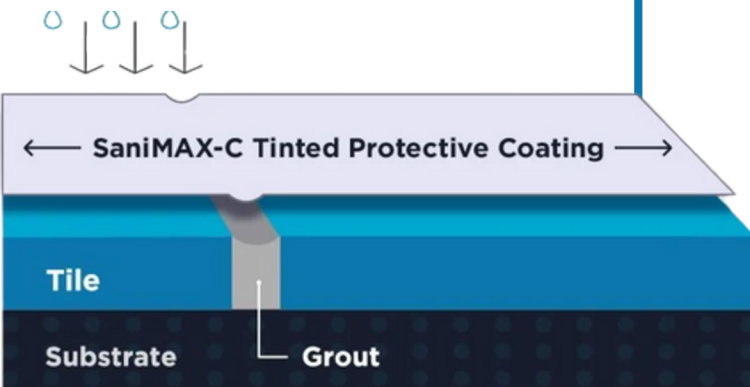
**VariGLAZE MAX™** is an advanced **HIGH BUILD** restorative bonding process utilizing three layers of very durable coatings, plus densely arranged decorative choice of accent chips or quartz, that overlays the entire surface. The base is a pigmented coating available in a choice of colors; the top coat is a clear coating. **This process will change the color of both the tile and grout to create a neat, unified look utilizing a dense high build system.** A special compound of micro-particles can be added to enhance appearance and improve the coefficient of friction. **VariGLAZE MAX provides greater depth and a higher level of appearance than its predecessor, VariGLAZE, along with the ultimate in protection.**



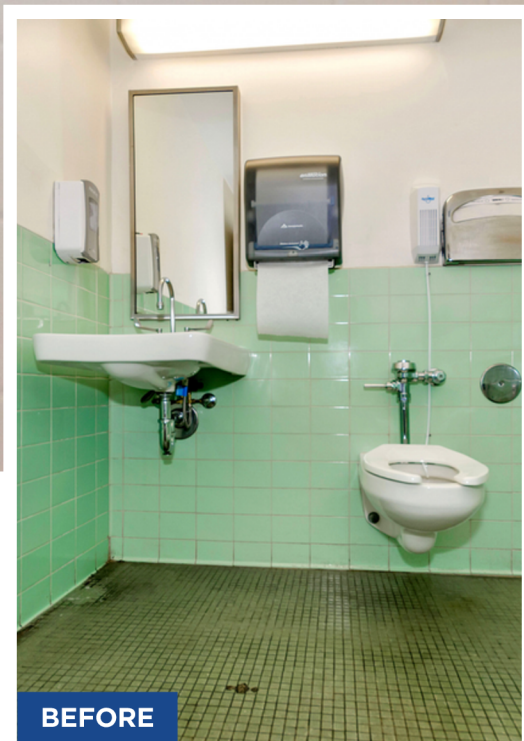
# ChromaGLAZE



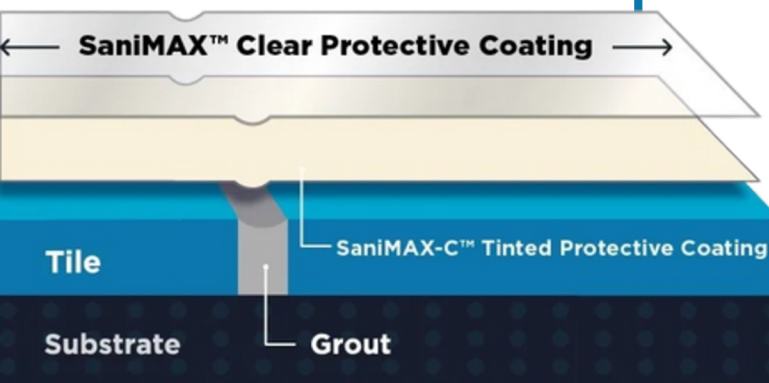
**ChromaGLAZE<sup>SM</sup>** is a restorative bonding process utilizing a very durable, pigmented coating to overlay the entire tile & grout surface. **This process will change the color of both the tile and grout to create a neat, unified look.** A special compound of micro-particles can be added to enhance appearance and improve the coefficient of friction. **ChromaGLAZE<sup>SM</sup>** provides an exceptionally high level of appearance and protection.



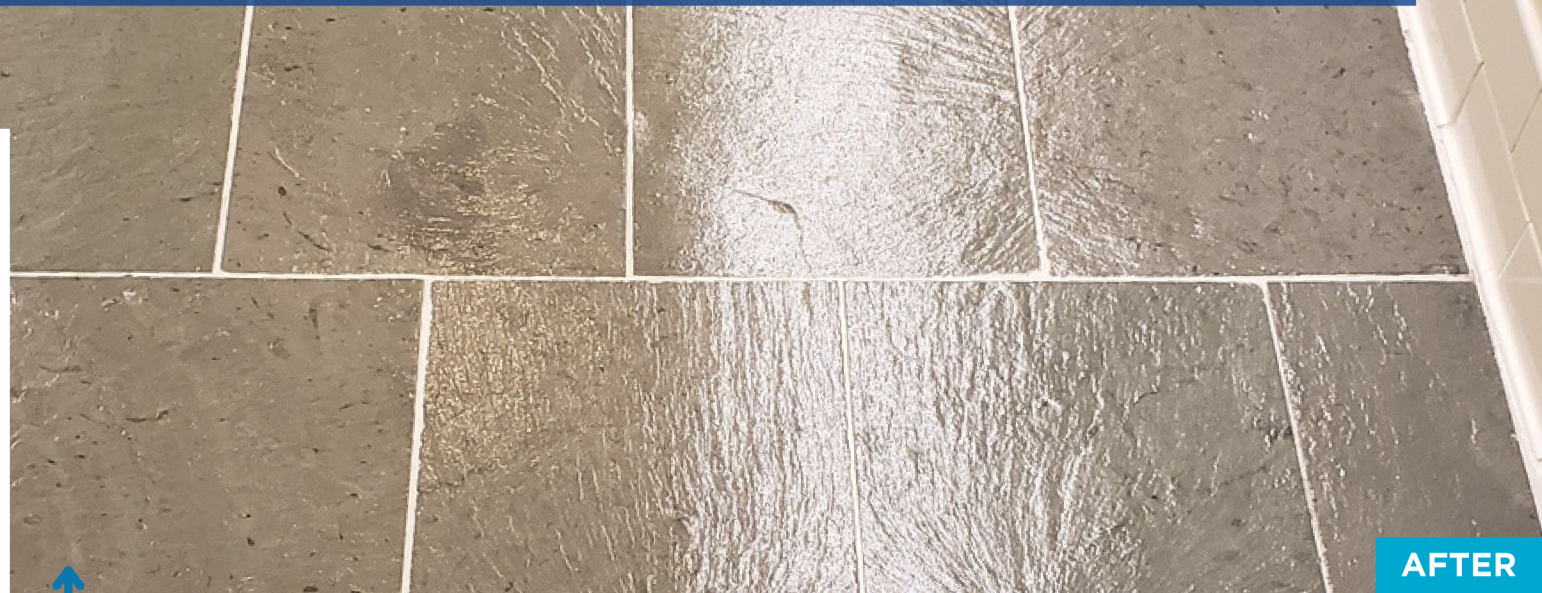
# ChromaGLAZE+



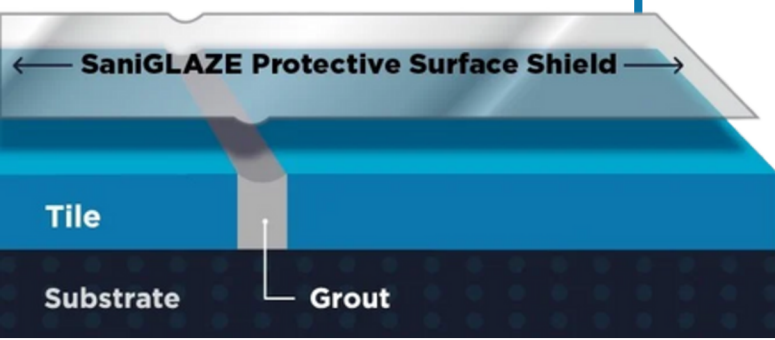
**ChromaGLAZE+<sup>SM</sup>** is a restorative bonding process utilizing two very durable coatings to overlay the entire surface. **One is a pigmented coating available in a variety of colors; the other is a clear coating.** This process will change the color of both the tile and grout to create a neat, unified look. A special compound of micro-particles can be added to enhance appearance and improve the coefficient of friction. **ChromaGLAZE+<sup>SM</sup> provides an exceptionally high level of appearance and the ultimate in protection.**



# SurfaceGLAZE



**SurfaceGLAZE<sup>SM</sup>** is a protective bonding process for tile surfaces. A specialized clear protective coating is installed to shield the entire surface. **This process will restore the natural color and original luster of the tile in most cases.** The grout joints will be cleaned and shielded by the same coating used on the entire surface area; they will remain their original color. **SurfaceGLAZE<sup>SM</sup> enhances appearance and provides a layer of protection.**



# GroutGLAZE



BEFORE



AFTER

**GroutGLAZE<sup>SM</sup>** is a restorative bonding process for grout joints. A specialized protective coating is installed to overlay the existing grout. **The grout joints will be restored to like-new condition; the color of the grout can be changed if desired.**



# Where can SaniGLAZE Processes be applied?

**SaniGLAZE Processes can be applied to most hard surfaces.** The SaniMAX and SaniMAX-C coatings can be applied on painted and unpainted surfaces such as **concrete, stone and other hard surfaces**. A decorative chip pattern is available for a totally unique and customized look.

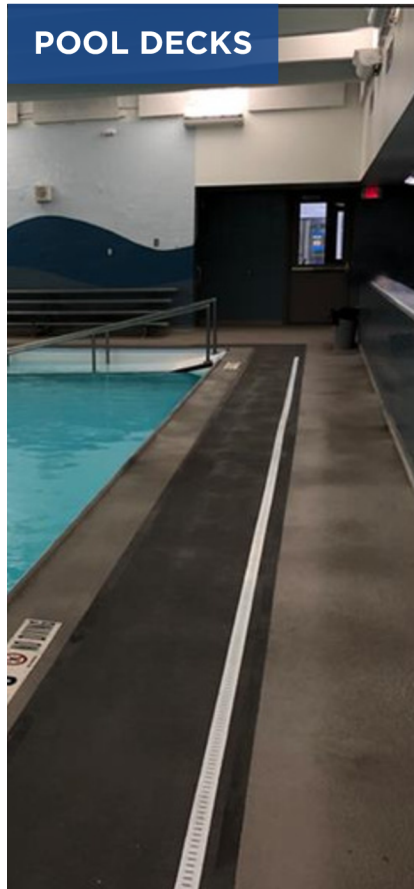
KITCHENS



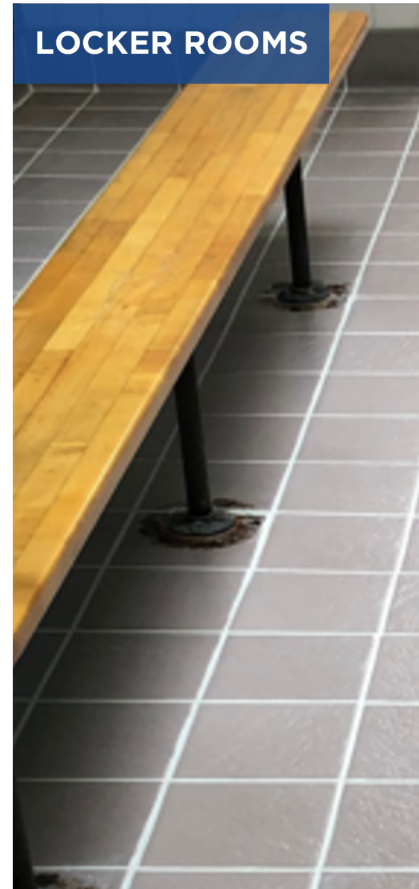
RESTROOMS



POOL DECKS



LOCKER ROOMS



OFFICES



We're not just about restoring floors and walls -  
**SaniGLAZE transforms most hard surfaces.**



**Exterior Door**  
*ChromaGLAZE*



**Countertop**  
*VariGLAZE*



**BEFORE**



**SaniGLAZE**  
TILE & HARD SURFACE RESTORATION

🌐 [www.saniglaze.com](http://www.saniglaze.com)

📞 800.874.5554

✉ [info@saniglaze.com](mailto:info@saniglaze.com)



Schedule Your Consultation **Today!**